

## DATA QUALITY SHEET



### **$\lambda$ DNA Marker, BstEII, digest**

*FOR RESEARCH USE ONLY*  
*Cat. GC-015-002*

#### **DESCRIPTION**

BstE II DNA Marker consists of 15 fragments ranging in size from 117 to 14140 bp. Their asymmetric distribution makes determination of molecular weight easier. Two fragments containing the cos sites hybridize to each other resulting in additional band of 14140 bp at the top. This can be avoided by heating the marker to 80°C for 15 minutes and cooling it on ice.

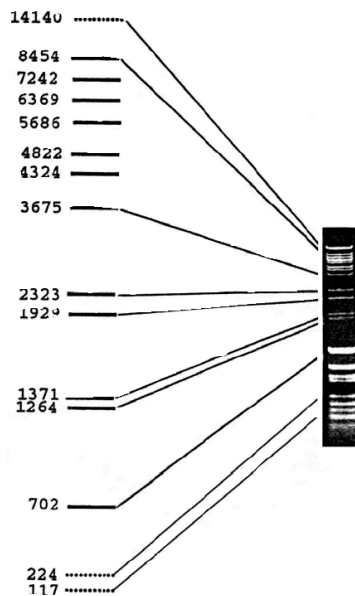
#### **STORAGE TEMPERATURE**

Store at +4°C to -20°

#### **ASSOCIATED ACTIVITIES**

The marker is ready to use. Load 10 $\mu$ l in one lane.

To demonstrate the mobility of the DNA fragments, 1 $\mu$ g of marker was loaded into a 1% agarose gel.



#### **FUNCTIONAL ANALYSIS**

Tested functionally in a unit activity test.