

## DATA QUALITY SHEET



### **100 bp + 50 bp DNA Ladder**

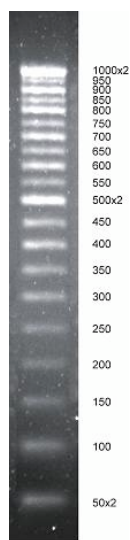
*FOR RESEARCH USE ONLY*

*Cat. GC-015-009*

**DESCRIPTION** Plasmid DNA was completely digested with endonuclease restriction, phenol/chlorophorm extracted, ethanol precipitated and dissolved in storage buffer. The DNA Ladder yields the following 22 discrete fragments (in base pairs): 1000x2, 950, 900, 850, 800, 750, 700, 650, 600, 550, 500x2, 450, 400, 350, 300, 250, 200, 150, 100, 50x2.

**CONCENTRATION** 0.1 µg/µl

**PACK SIZE** 50 µg in 500 µl in loading buffer (0.25% bromphenolblue, 0.25% xylene cyanol FF, 40% sucrose in water).



100+50 bp Marker in  
2.5% agarose, 1x TAE  
0.25 µg/line

**STORAGE BUFFER** 10mM Tris-HCl (pH 8,0) and 1mM EDTA)

**EXPIRY DATE** Half-Life two years

**FUNCTIONAL ANALYSIS** Tested functionally in a unit activity test.